

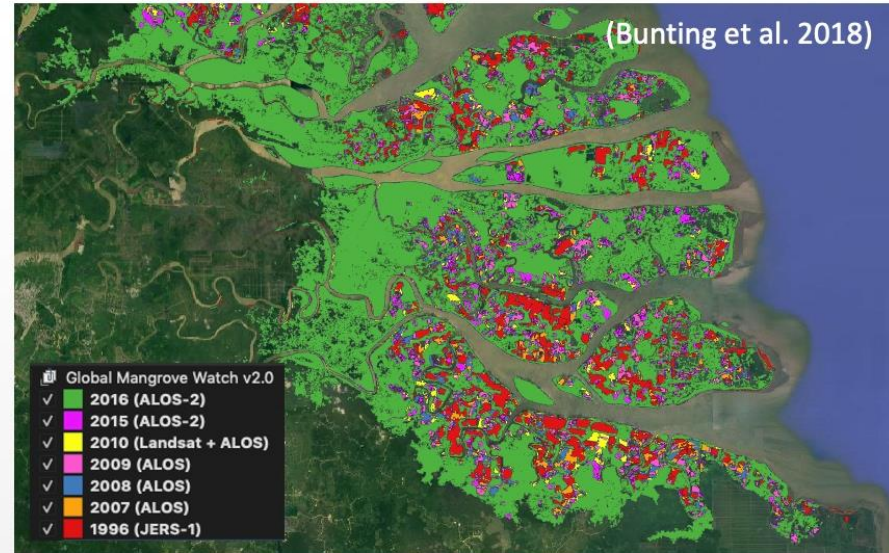


MANGROVES (Forest / OLU-Wetlands)

Activity Data – Global Mangrove Watch (JAXA K&C)

Global maps of mangrove area and annual changes at 25 m derived from L-band SAR and optical data. Open access in public domain.

1996–2020 available for COP-26. 2019-2021 for GST1.

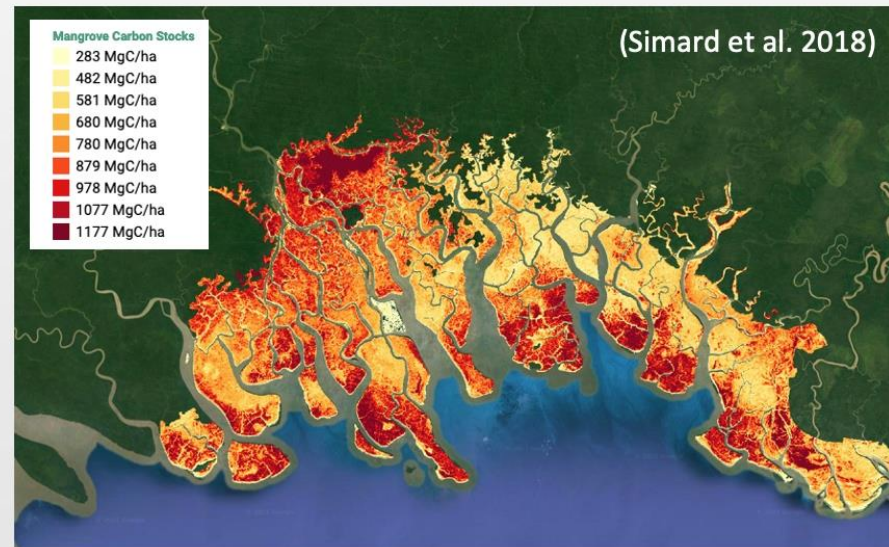


Emission Factors – LCLUC Global Mangrove Mapping (NASA JPL/GSFC)

Global maps of mangrove Height, AGB and Total Biomass at 30 m. Open access in public domain.

Baseline year 2000 derived from SRTM DEM.

New 2015 baseline at 12 m from TanDEM-X DEM for release 2021/Q4.





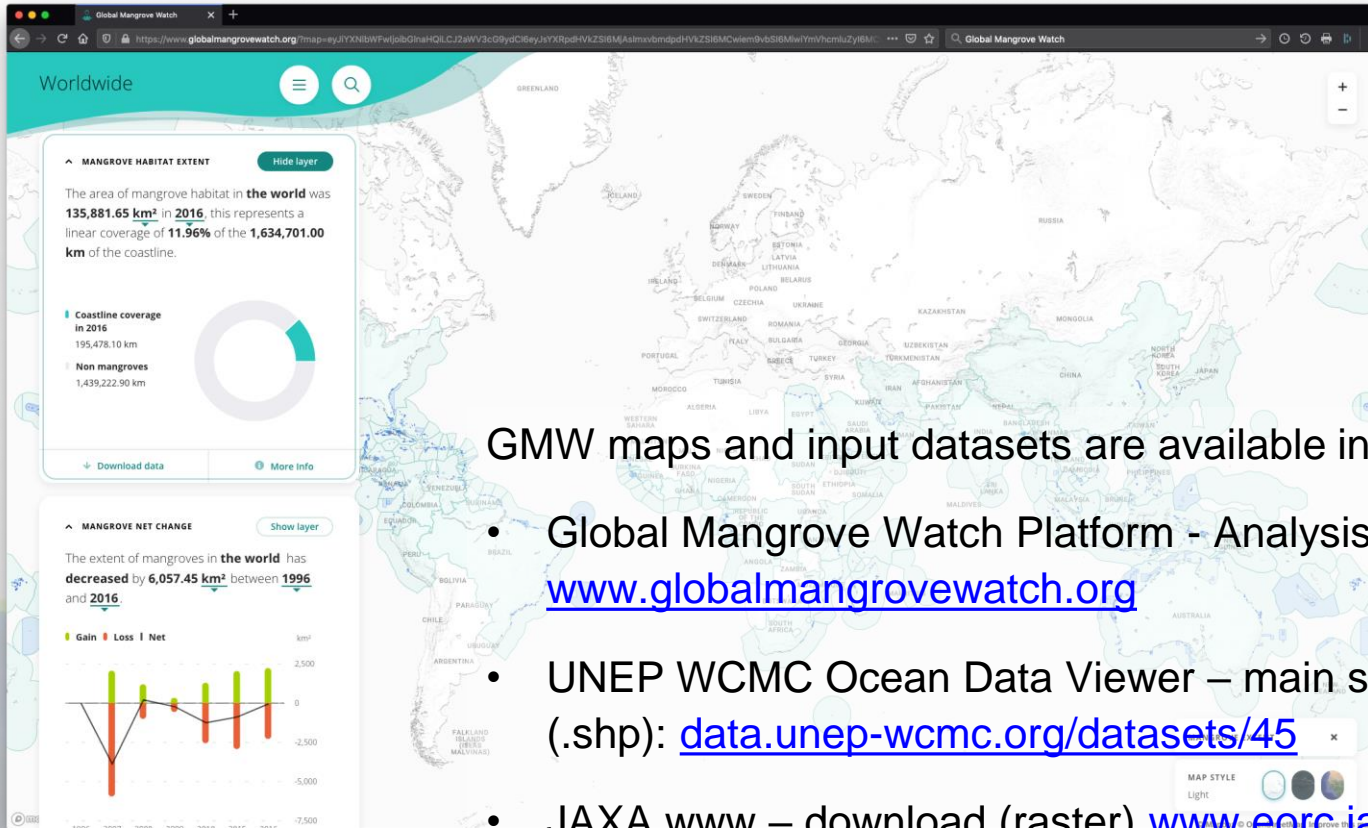
	COP-26 (Nov 2021)	GST1 (2021-23?)	Beyond (2024+)	Notes
Biomass	Fall back is individual existing datasets Synthesised biomass product providing estimates at a jurisdictional level globally	Synthesized, jurisdictional level biomass, emission factors (and prototype biomass change)	Synthesized spatially explicit, annual biomass, emission factors and biomass change	Work plan and schedule provided
Land Cover	- Copernicus annual global land cover - C3S/CCI Landcover - WorldCover, - HILDA+	Synthesised map products and estimates of land cover and change at regional, and global levels	Statistically robust activity data estimates (6 IPCC classes) at national and global levels	GOFC-GOLD coordination proposed
Forest	- Global Forest Watch tree cover loss and forest fluxes	Global tree cover and change and forest emissions and removals	Global annual forest emissions and removals at 30-100 m resolution	
OLU - Wetlands	- Global Mangrove Watch cover and change - Global Mangrove biomass	Global mangrove cover and change at 25 m Global mangrove biomass at 12 m resolution	Global annual mangrove emissions and removals at 10 - 25 m resolution	In coordination with GMW
Agriculture	Demonstration WorldCereal products for at least 4 countries (Argentina, Spain, Ukraine and Tanzania)	Initial WorldCereal map and analytical system. On-going seasonal analysis products	Continual system improvement and production of seasonal state and change products	In coordination with GEOGLAM

Indicates off the shelf datasets possible; **Indicates additional resources needed**



	COP-26 (Nov 2021)	GST1 (2021-23?)	Beyond (2024+)	Notes
Biomass	<p>Fall back is individual existing datasets Synthesised biomass product providing estimates at a jurisdictional level globally</p>	<p>Synthesized, jurisdictional level biomass, emission factors (and prototype biomass change)</p>	<p>Synthesized spatially explicit, annual biomass, emission factors and biomass change</p>	<p>Work plan and schedule provided</p>
Land Cover	<ul style="list-style-type: none"> - Copernicus annual global land cover - C3S/CCI Land Cover - WorldCover, - HILDA+ 	<p>Synthesised map products and estimates of land cover and change at regional, and global levels</p>	<p>Statistically robust activity data estimates (6 IPCC classes) at national and global levels</p>	<p>GOFC-GOLD coordination proposed</p>
Forest & OLU- Wetlands	<ul style="list-style-type: none"> - Global Forest Watch tree cover loss and forest fluxes - Global Mangrove Watch cover and change - Global Mangrove Biomass 	<p>Global tree cover and change and forest emissions and removals</p> <p>Global mangrove cover and change at 25 m</p> <p>Global mangrove biomass at 12 m resolution</p>	<p>Global annual forest emissions and removals at 30-100 m resolution.</p> <p>Global annual mangrove emissions and removals at 10 - 25 m resolution</p>	<p>In coordination with GMW</p>
Agriculture	<p>Demonstration WorldCereal products for at least 4 countries (Argentina, Spain, Ukraine and Tanzania)</p>	<p>Initial WorldCereal map and analytical system.</p> <p>On-going seasonal analysis products</p>	<p>Continual system improvement and production of seasonal state and change products</p>	<p>In coordination with GEOGLAM</p>

Indicates off the shelf datasets possible
Indicates additional resources needed



GMW maps and input datasets are available in the public domain:

- Global Mangrove Watch Platform - Analysis Toolbox: www.globalmangrovetwatch.org
- UNEP WCMC Ocean Data Viewer – main site for data download (.shp): data.unep-wcmc.org/datasets/45
- JAXA www – download (raster) www.eorc.jaxa.jp/ALOS/en [release 2021]
- WRI Global Forest Watch, Resource Watch (Land Cover/Mangroves) www.globalforestwatch.org

Sustainable Development Goals, Target 6.6, Indicator 6.6.1 (Wetlands Extent and Changes)

- GMW designated by UNEP as official mangrove dataset for SDG 6.6.1 reporting
- SDG analysis tools on UNEP Freshwater Ecosystems Explorer [www: https://www.sdg661.app/](https://www.sdg661.app/)

