

GOFC-GOLD LAND COVER IMPLEMENTATION TEAM WORKSHOP AND INAUGURATION OF ESA LAND COVER PROJECT OFFICE JENA, 2-4 MARCH 2004



Last row from left: R.Ressler, H.Geist, S.Bartalev, J.Latham, A.Rosenqvist, C.Woodcock, H.Jeanjean, S.Plummer, T.Haeusler
 Center row from left: M.Schmidt, A.Belward, C.Giri, M.Brady, J.Townshend, D.Skole, O.Krankina, H.Balzter
 Front row from left: A.Di Gregorio, M.Mahmud, M.Larsen, C.Schmullius, O.Gershenson, M.Herold

The second meeting of the GOFC-GOLD Land Cover Implementation Team

(LC-IT) was held 2-4 March 2004 at the Friedrich Schiller University Jena, Germany. The meeting was organized as "kick off" for the new ESA Land Cover Project Office and focused on several general objectives:

1. Inauguration of the new ESA Land Cover Project Office,
2. Review and evaluation of previous accomplishments and implementation objectives of the GOFC-GOLD LC-IT,

3. Discussion of efforts in global land cover mapping,
4. Development of action plans for GOFC-GOLD land cover implementation

The meeting was attended by 26 participants; members from the GOFC-GOLD LC-IT, representatives from several national and international organizations (e.g. from FAO, GTOS, CEOS), space agencies (ESA, DLR, CNES, JAXA), and members of the scientific community and companies.

Continued on page 2

CONTENTS

- GOFC-GOLD Land Cover Implementation team workshop and inauguration of ESA Land Cover Project Office Jena **1**
- Project Office deliverables **2**
- GLOBCOVER user workshop, 20 April 2004 **3**
- Upcoming Land Cover events **4**
- Miscellaneous **4**

The first two days of the workshop were dedicated to review the Implementation Team and Regional Network activities, discuss ongoing and contributory projects and initiatives, and elaborate on the scientific perspective on the role of global land cover observations, in particular for land cover mapping and monitoring, and carbon modelling and accounting. Special attention was given to European contributions. Prof. John Townshend (chair of GOFC-GOLD) and Prof. David Skole (co-chair of the LC-IT) outlined the previous GOFC-GOLD achievements and emphasized the role of GOFC-GOLD as catalyst that brings together the variety of institutions and interest groups involved in the global earth observation process. In numerous subsequent presentations updates of ongoing and future efforts in mapping, monitoring and modelling of land dynamics were presented and discussed following the objectives of the GOFC-GOLD LC-IT.

In order to make contributions to the GOFC-GOLD LC-IT objectives the following breakout groups were formed during the workshop:

1. Land cover **classification and harmonization**
2. **Adequacy and advocacy** of observing systems and data
3. **Validation** of land cover products

Breakout group discussions aimed to review prominent issues raised during the workshop, identify the role of GOFC-GOLD towards resolving and responding to the discussed issues, and define LC-IT actions and implementation steps for immediate steps and visionary goals that should be brought up in next meetings.

More specifically, global land observations for mapping and modelling carbon dynamics are crucial and should be the priority of the LC-IT. This extends the previous activities that were strongly focused on forest cover and other specific land cover types, as well as, ecosystem assessment. The GOFC-GOLD LC-IT has to strengthen the consideration of earth observation requirements posed by international conventions. Particularly the adequacy and advocacy of current and future earth observation efforts in supporting these requirements should be a central component in the implementation strategy. Furthermore, the GOFC-GOLD LC-IT will take immediate action in specific areas:

1. The **harmonization of global and regional land cover products** in close cooperation with the FAO to apply the Land Cover Classification System (LCCS) as a translation between and among the different maps and their thematic legends.
2. The **validation of global earth observation products**. In cooperation with the CEOS Cal/Val group, the efforts will immediately focus on existing global land cover maps, and in the near future on continuous field products.
3. The analysis of land change requires **coordinated international activities** that will be initiated and guided through the LC-IT framework. Example are the proposed joint "US – European assessment of tropical forest change" discussed during the workshop and the Integrated Global Observations of the Land (IGOL) initiative, a proposed new theme of the IGOS Partnership.

Detailed information on the meeting, the agenda and participants list can be found at: <http://www.gofc-gold.uni-jena.de> and can be received from the meeting report.

The meeting was supported by several sponsors that are kindly acknowledged:



PROJECT OFFICE DELIVERABLES

The following deliverables have been released by the GOFC-GOLD Project Office since its establishment:

- o GOFC-GOLD Land Cover Meeting Report
- o Project Office Quarterly Status Report
- o Prototype studies criteria catalogue

GLOBCOVER USER WORKSHOP, 20 APRIL 2004

 The GLOBCOVER user workshop was held on 20 April 2004 at ESA/ESRIN. The meeting was intended to give an update on the project and to discuss future steps and activities for each project partner. The workshop was attended by representatives of ESA, Food and Agriculture Organization of the United Nations (FAO), United Nations Environment Programme (UNEP), Joint Research Centre of the European Commission (JRC), International Geosphere-Biosphere Programme (IGBP) and GOFC-GOLD.

The GLOBCOVER project was launched 2004 as an initiative of ESA which is now evolving to an international collaboration be-

tween ESA, FAO, UNEP, JRC, IGBP and GOFC-GOLD.



The objective of GLOBCOVER is to produce a global land-cover map for the year 2005, using as main source of data the fine resolution (300 m) mode data from MERIS sensor on-board ENVISAT satellite to be acquired over the full year 2005.

This new product is intended to update and to complement the other existing comparable global products, such as the global land cover map for the year 2000 (GLC 2000) with a resolution of

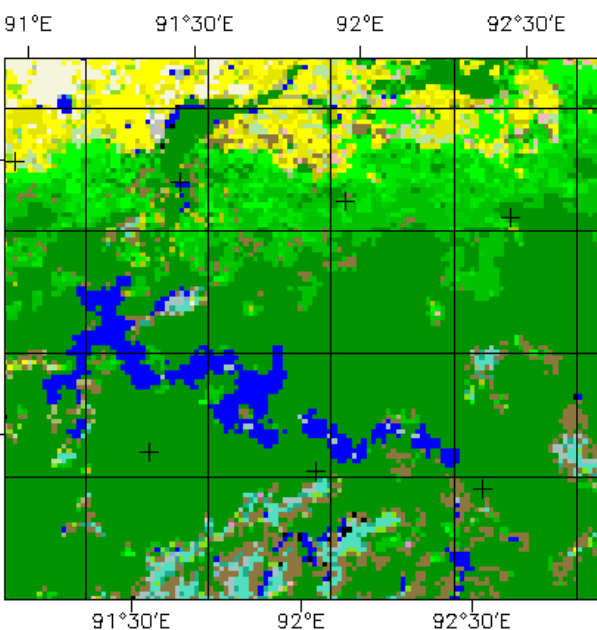
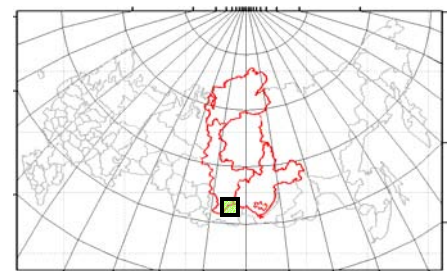
1 km produced by the JRC (see figure below). Appropriate approaches for the validation of the land cover products are planned to be defined in consultation with CEOS. The GOFC-GOLD project office will play an active role in the coordination of the validation of the land cover products and its responsibilities.

The next workshop is planned to be held in July 2004 and is intended to discuss progress and future tasks of GLOBCOVER, e.g. geolocation and calibration of MERIS data, validation strategies and the definition of user requirements.

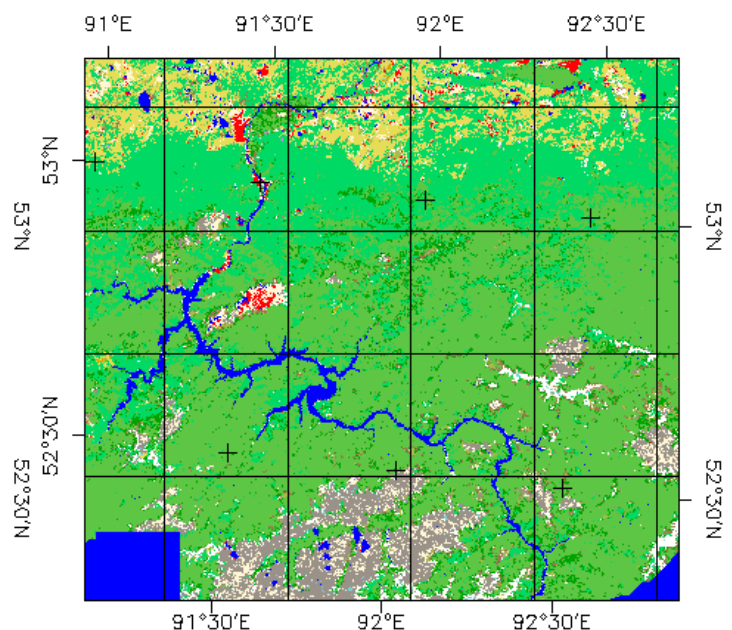
For further information about GLOBCOVER contact Mr. Olivier Arino (olivier.arino@esa.int).

Land Cover products for a selected part of the Siberia II region

Result: Agriculture-forest-tundra



GLC-2000 map, 1km resolution



LC map from MERIS, 300m resolution

UPCOMING LAND COVER EVENTS

GOFC EVENTS	
July 2004	
<p>GOFC-GOLD Land Cover IT Meeting</p> <p>Venue: Food and Agriculture Organization of the United Nations (FAO), Rome, Italy</p> <p>Date: 15-16 July 2004</p> <p>Contact: Christiane Schmuilius c.schmuilius@uni-jena.de</p>	<p>Objectives:</p> <ul style="list-style-type: none"> o Review of accomplishments and future prospects of the GOFC-GOLD Land Cover IT and the ESA Land Cover Project Office o Development of the implementation strategy for harmonization of regional and global land cover products o Harmonization as part of global land cover validation efforts o Update on progress of the GLOBCOVER project
NON-GOFC EVENTS	
May 2004	
<p>24th EARSeL Symposium</p> <p>Venue: Inter University Centre, Dubrovnik, Croatia</p> <p>Date: Symposium: 25-27 May Workshop: 28-29 May</p> <p>Contact: Matthias Braun sig-lulc@uni-bonn.de</p>	<p>Objectives:</p> <ul style="list-style-type: none"> o Bringing together all the European remote sensing scientific, research and user organisations and communities in order to enable close contacts and open up channels of communication and information. o A key role of EARSeL is to act as an interface between research results and their operational applications by user communities. o The conference is accompanied by special tutorial sessions and a workshop on land use and land cover
August 2004	
<p>LUCC Workshop on Impacts of changes in land use and management on carbon stocks and turn-over in the tropics</p> <p>Venue: Institute of Geography, University of Copenhagen, Denmark</p> <p>Date: 23-25 August</p> <p>Contact: Kjeld Rasmussen kr@geogr.ku.dk</p>	<p>Objectives:</p> <ul style="list-style-type: none"> o The idea of the workshop is to organize a forum for a change and discussion on research issues related to carbon pools in vegetation and soils and fluxes between them. o The themes of the workshop are: <ol style="list-style-type: none"> 1. Vegetation carbon stocks 2. Soil carbon stocks and turn-over 3. Models and scenarios

MISCELLANEOUS

<p>THE ESA LAND COVER PROJECT OFFICE NEWSLETTER</p> <p>Newsletter Subscription</p> <p>The Newsletter is distributed free of charge to all members listed in the ESA Land Cover Project Office database. To update your information, to subscribe or to be removed from our database, please contact us at:</p> <p>Friedrich Schiller University Institute of Geography Loebdergraben 32 07743 Jena Germany Email : c3neka@uni-jena.de</p>	<p>THE NEW GOFC-GOLD LAND COVER PROJECT OFFICE WEBSITE</p> <p>The ESA Land Cover Project Office online</p> <p>Since beginning of April the ESA Land Cover Project Office has been hosting an own website. Update information about the project office, its objectives, activities and events can be found at:</p> <p>http://www.gofc-gold.uni-jena.de</p>
---	--