

# SPACE FOR SUSTAINABLE DEVELOPMENT

Unilever



JAN KEES VIS

*GLOBAL DIRECTOR SUSTAINABLE SOURCING  
DEVELOPMENT*

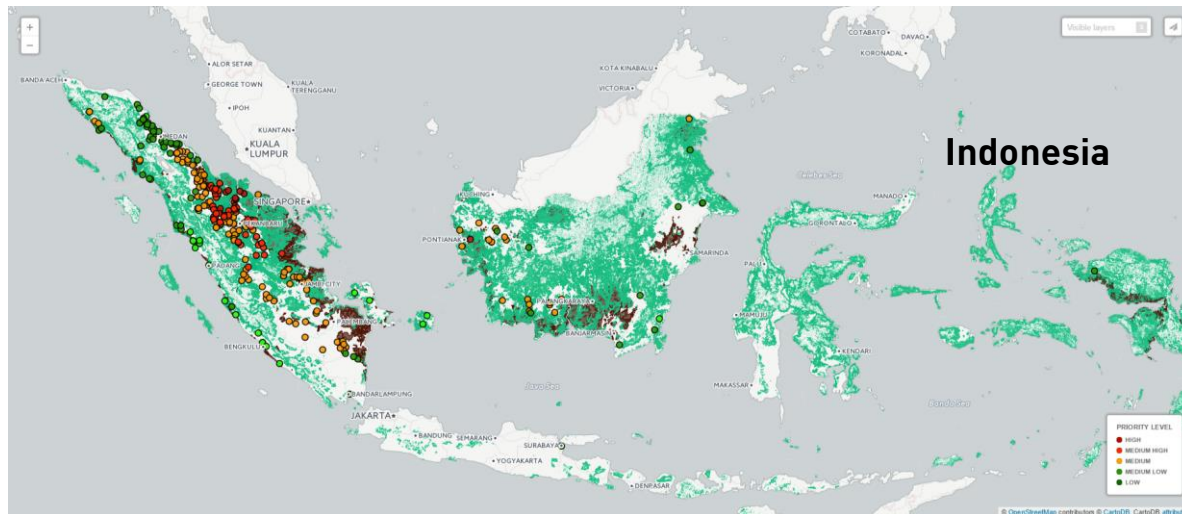
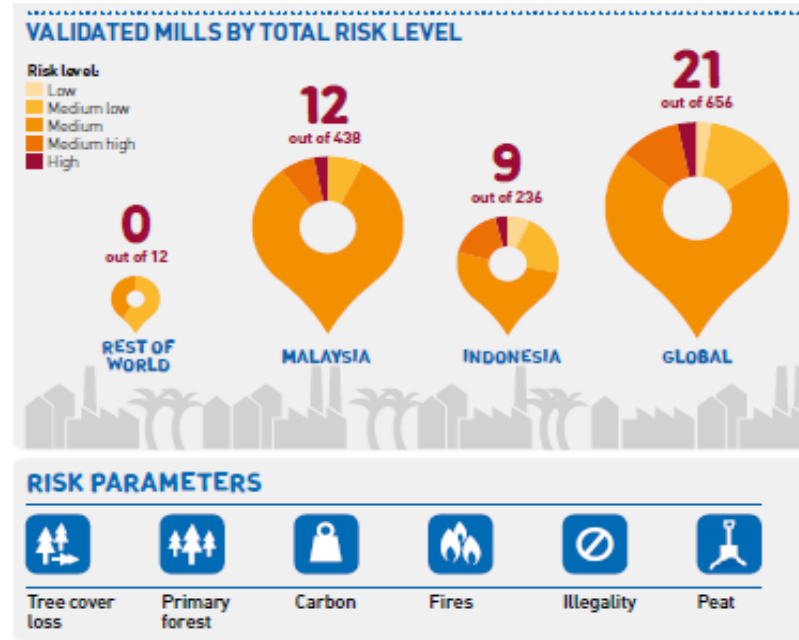
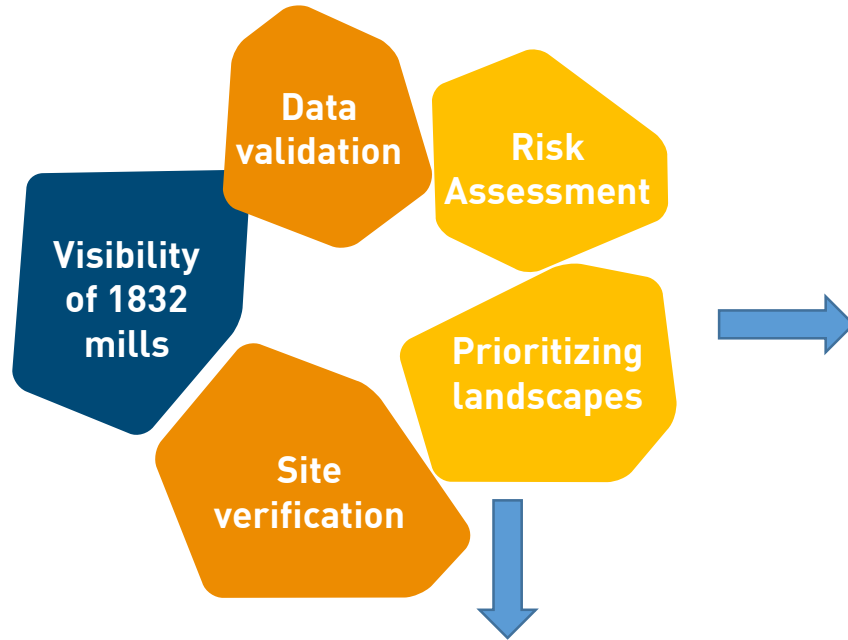
*MIN. ECONOMIC AFFAIRS, THE HAGUE, NOV 2<sup>ND</sup> 2016*



# UNILEVER SUSTAINABLE LIVING PLAN



# TRACEABILITY & RISK ASSESSMENT PO: GFW



132 suppliers  
 1,832 mills

- Geo-locations of ~50% validated (Malaysia & Indonesia)
- **71% traceability**



# ASSURANCE & DEVELOPMENT

We need assurance systems that go “beyond certification”:

- Self Assessments
- Landscape approaches (“Ag Cloud”)

We need impact assessment methodologies in many areas:

- Livelihoods; Productivity; Biodiversity

Earth Observation could be used for:

- Vegetation/canopy cover
- Foliage analysis (nutrition)
- Plant water stress

