



Global Observations of Forest Cover and Land Dynamics

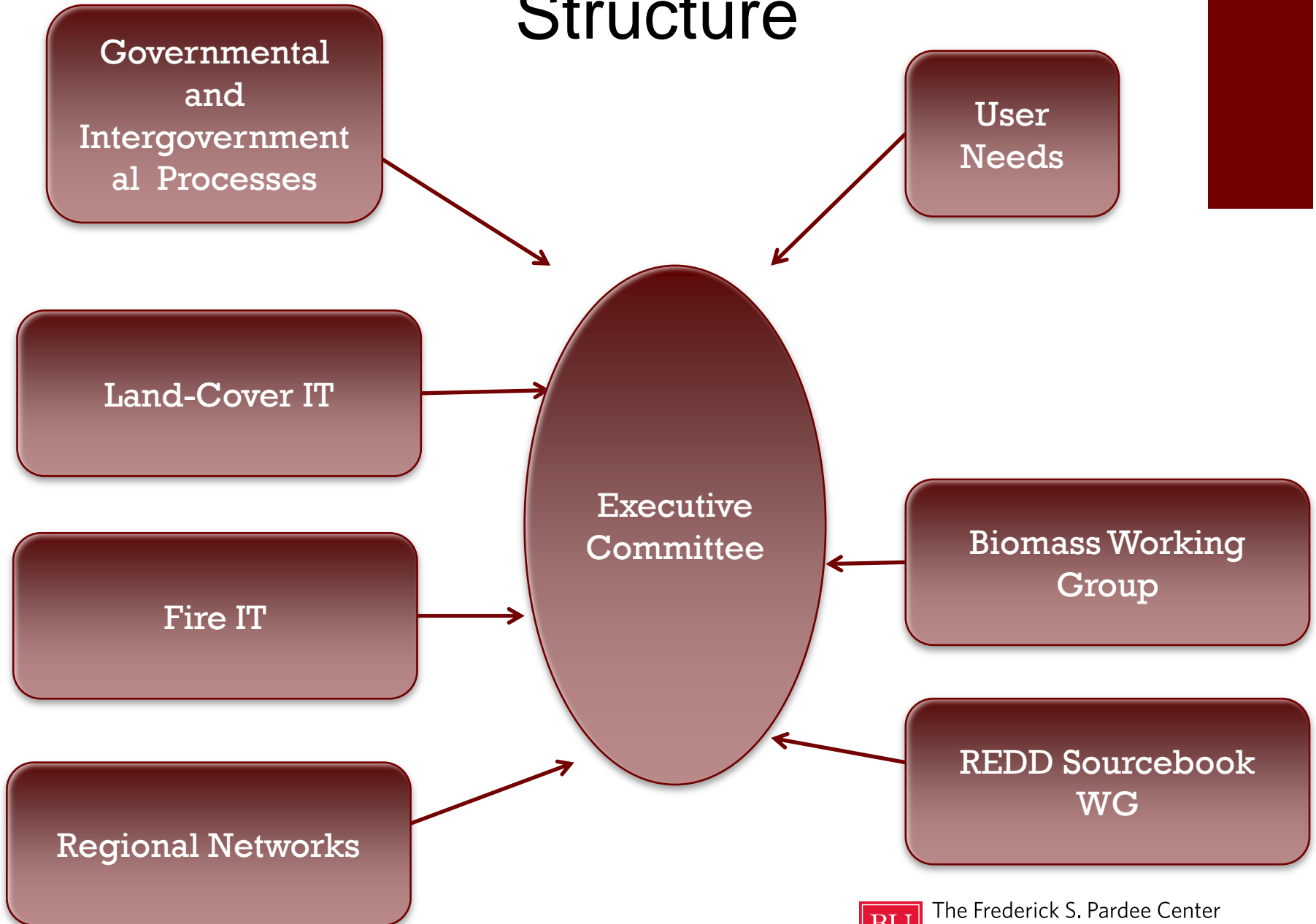


GOFC-GOLD

- Created originally as a project of Committee of Earth Observing Satellites (CEOS)
- Transformed itself into a broader-themed organization to take advantage of both the developing science and policy interest in forest and land-cover related issues
- Primary focus over time has been on forest issues – land cover, fire, biomass
- Important regional components – commitment to scientific capacity building



Structure



Samples of Accomplishments

- Land Cover - Extensive use of historical archives, global products, emphasis on validation and intercomparison of products
- REDD+ - Extensive use of the Sourcebook
- Fire – Moving towards global fire risk using satellite data, global and regional fire assessments
- Regional Networks - Bringing regional expertise to bear in many parts of the world
- Biomass - Galvanizing the scientific community to pursue new opportunities

How does GOFC-GOLD Evolve?

- Keeping track of a dynamic policy context
- At its initiation, major policy effort was slowing tropical deforestation and understanding the global carbon cycle
- Those issues haven't disappeared, but they have been augmented by other concerns
 - REDD and REDD+
 - Climate mitigation
 - Climate impacts and adaptation
 - Maintenance of ecosystem services

New Issues from IPCC Assessments and Climate Policy Processes (with GCOS)

- Climate mitigation and carbon management
 - Change in carbon content of ecosystems
 - Change in extent of ecosystems
- Systematic tracking of forest loss and gain
- Systematic tracking of forest degradation
- Above-ground carbon retrievals
- Links to model development and validation
- Monitoring and verification analyses

New Issues from IPCC Assessments and Climate Policy Processes (with GCOS)

- Role of systematic observations of climate impacts
- Development of indicators systems
- Disentangling human-driven changes from climate-driven changes
- Applications for climate adaptation studies

Evolution

- Use these as an example of how GOF-C-GOLD can evolve to support a dynamic policy environment
- That environment continues to change rapidly
- Monitoring and verification of INDC's
- Land-cover contribution to SDG's
- Moving from land-cover to assessments of land-use
- Verification and open data policies
- Importance of regional perspectives

Concluding Thoughts

- GOFC-GOLD will continue to evolve as its policy context continues to evolve
- The scientific and observational base for evaluating progress in mitigation, impacts and adaptation, vulnerability must be maintained
- The methods used to develop that base must be transparent and validated
- As we move towards understanding the confluence of climate goals, resilience goals, ecosystem service goals, and now progress towards the SDG's
- GOFC-GOLD will need to keep pace

Analysis for a better tomorrow, today.

67 Bay State Road
Boston, Mass. 02215

(617) 358-4000
www.bu.edu/pardee



facebook.com/BUPardeeCenter



[@BUPardeeCenter](https://twitter.com/BUPardeeCenter)



flickr.com/BUPardeeCenter



The Frederick S. Pardee Center
for the Study of the Longer-Range Future